

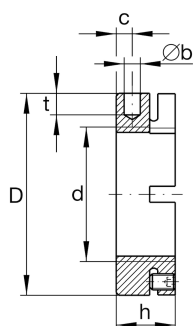
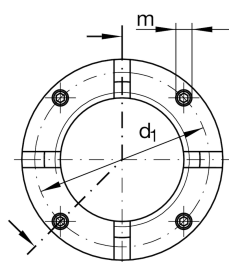
AM60

Precision locknut

Schaeffler ID:
0077315310000

Precision locknuts AM, segments for
clamping

Technical information



Main Dimensions & Performance Data

| | | |
|----------|------------------------|---------------------------|
| d | M60X2 | Thread |
| D | 90 mm | Outside diameter |
| h | 26 mm | Height |
| F_{aB} | 550,000 N | Breaking load, axial |
| M_L | 365 Nm | Breakawag |
| M_{AL} | 100 Nm | Mounting torque reference |
| M_m | 9.4 kg*cm ² | Mass moment of inertia |
| | 650 g | Weight |

Mounting dimensions

| | | |
|-------|-------|---------------------------|
| M_m | 15 Nm | Mounting torque set screw |
|-------|-------|---------------------------|

Dimensions

| | | |
|-------|-------|---------------------------------|
| b | 6 mm | Bore diameter blind hole |
| t | 8 mm | Depth blind hole |
| d_1 | 80 mm | Pitch circle diameter 1 (holes) |
| c | 8 mm | Distance bore |
| m | M8 | Threaded - threaded pin |